

Intermittent Closed Catheterisation System

DESCRIPTION

Our Intermittent Closed Catheterisation System is sterile and pre-lubricated with Hydrophilic gel, so no additional preparations is needed. The closed system works like a traditional Nelaton Catheter and provides a simple catheterisation that reduces the risk of urinary tract infections.

FEATURES & BENEFITS

- Sterile closed system
- Pre-lubricated
- Heat polished eyelets
- Colour coded
- Smooth round tip

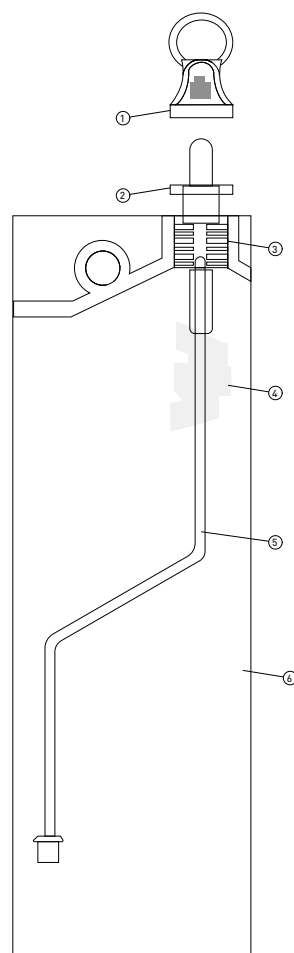
PRODUCT DATA

- Bag size: 1500mL
- Side holes: 2
- Length: 42cm
- Not Made with DEHP
- Not Made with Natural Rubber Latex
- BPA: No
- Material: PVC
- Shelf life: 3 years
- ARTG number: 210992
- Sterile EO

ISO STANDARDS

- ISO 10993-1:2003 Biological evaluation of the medical devices-Part 1: Guidance on selection of tests
- ISO 14155-2:2003 Clinical investigation for medical devices for human subjects—part2:Clinical investigation plans
- ISO 11135-1:2007 Health-care Product Sterilisation Confirmation and Sterilisation by medical ETO verification and routine control

PRODUCT DIAGRAM



ITEM	DESCRIPTION
1	Cap
2	Tip
3	Interface
4	Gel
5	Nelaton Catheter
6	Bag

Intermittent Closed Catheterisation System

Intermittent Closed Catheterisation System				STERILE
RE-ORDER	DESCRIPTION	GAUGE	BAG CAPACITY	CARTON/QTY
UR050008	Intermittent Closed Catheterisation System	8Fr	1500mL	25
UR050010	Intermittent Closed Catheterisation System	10Fr	1500mL	25
UR050012	Intermittent Closed Catheterisation System	12Fr	1500mL	25
UR050014	Intermittent Closed Catheterisation System	14Fr	1500mL	25
UR050016	Intermittent Closed Catheterisation System	16Fr	1500mL	25